

Safety Declaration

Safety and accident prevention must be a part of the bid preparation when choosing to work with Layton Construction. When bids are presented, it is understood that the submitting company will meet regulatory and Layton standards for safety and accident prevention on all Layton projects, as outlined in this Safety Declaration and more thoroughly specified in the Layton Project Safety Management Plan. When a Layton requirement and a federal, state, or local requirement differ, the more stringent requirement will apply.

Trade Partner Pre-Mobilization

Prior to mobilization, each trade partner's project management and field supervisors will attend a pre-mobilization meeting led by the Layton project team. Trade partner field supervisors will discuss detailed project-specific safety hazards and describe how they and their lower-tier subcontractors intend to implement and conform to the Layton Project Safety Management Plan (PSMP).

Daily All-Hands Production/Safety Huddle

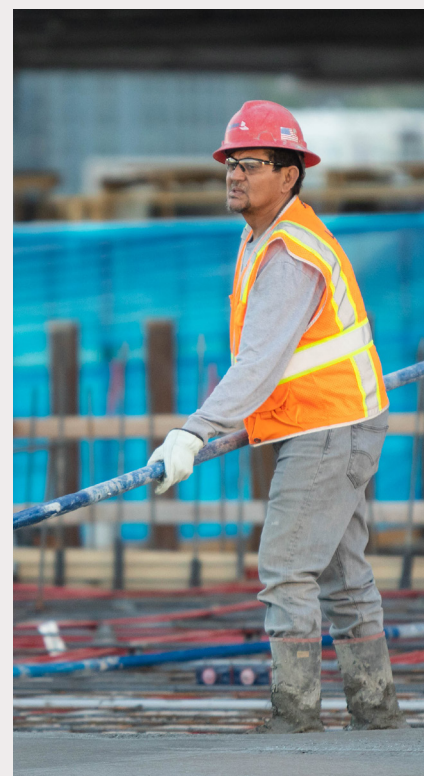
As led by the Layton project team at the beginning of each shift, all trade partner employees and lower-tier trade partner employees will participate in warm-up/stretching exercises, a meaningful discussion of planned work activities, and a critical review of each trade partner's pre-task plan.

GENERAL REQUIREMENTS

The stricter of 29 CFR 1926 and the Layton Project Safety Management Plan (laytonconstruction.com)

Trade Partner Supervision and Safety Inspection and Oversight Requirements

Each trade partner and lower-tier subcontractor supervisor should have OSHA 30-hour training. Each trade partner will provide an on-site, full-time safety professional when the trade partner and its lower-tier trade partners collectively have 50 or more employees on site, unless the trade partner is working under a Layton Corrective Action Plan, where a full-time safety professional may be required for fewer on-site employees. Trade partner supervisors will complete documented weekly safety audits in the Construct PM mobile app. These audits will describe the corrective actions taken for hazardous or non-compliant issues found.





Crew Pre-task Planning

Prior to beginning its work tasks, each trade partner work crew supervisor will engage in a meaningful pre-task planning meeting. Each planning meeting must be an open discussion between the supervisor and the workers accountable to the supervisor, completed in the work area when possible. Supervisors must analyze tasks to be performed and identify the work sequence, hazards, training, controls, tools, and emergency action plans necessary to protect the workers. Tasks, especially high-hazard tasks, must be described, and the means to implement each task's hazard control methods must be communicated. Supervisors must ensure that workers understand the hazards and hazard control expectations beyond the use of PPE. At least daily, each supervisor must submit in the Construct PM mobile app the crew's completed pre-task plan.

30-foot LaPSZ (Layton Personal Safety Zone)

The LaPSZ (Layton Personal Safety Zone) is the 30-foot bubble surrounding an individual. It is that individual's duty to watch for people, equipment, traffic, and other hazards and at-risk behaviors appearing within the 30-foot LaPSZ. All individuals on a Layton project are obligated to stop at-risk work and behavior within their 30-foot LaPSZ and to commend safe work and behavior.

Maximum Lifting Weight for Workers

No lift shall exceed 75 pounds unless a lift plan is approved by the Layton project team.

Weekly Trade Partner Coordination Meeting

Each trade partner supervisor will attend a weekly planning, coordination, and safety meeting led by the Layton project team.

Disciplinary Action

Trade partner and lower-tier subcontractor workers who fail to abide by the requirements of the Layton Project Safety Management Plan may be suspended or removed from the site. This is intended to preserve safety-conscious working conditions for all workers and encourage each employee to be responsible and conscientious.

Incident Reporting

All incidents (injuries, illnesses, property damage, close calls) will be reported immediately to the Layton project team, regardless of the actual or potential consequences. On a case-by-case basis, as determined by the Layton project team, post-incident drug testing may be required for anyone involved in an incident involving injury or property damage.

